

CLASSES & WORKSHOPS

2022
2023

FOUR 8-WEEK SESSIONS

FALL: SEPT 12–NOV 5

WINTER: NOV 17–JAN 21

SPRING 1: FEB 6–APR 1

SPRING 2: APR 17–JUNE 10





Cheltenham Center for the Arts
439 Ashbourne Road
Cheltenham, PA 19012
215-379-4660
www.cheltenhamarts.org

The Center is located 1.5 miles from the Northeast Philadelphia border. We are accessible by Public Transportation: SEPTA Route 70 bus stops at our door and the SEPTA Regional Rail (Fox Chase Line) stops at the nearby Cheltenham Station.

For more information about the Center and our instructors, visit our website at www.cheltenhamarts.org.

Sign up for our weekly e-newsletter at info@cheltenhamarts.org

FRIEND US AND FOLLOW US!

 @cheltenhamarts

 Cheltenham Art Center

 cheltenhamarts



The Cheltenham Center for the Arts receives arts funding support through grants from the Pennsylvania Council for the Arts, a state agency funded by the Commonwealth of Pennsylvania. The Cheltenham Center for the Arts accepts all students regardless of Race, religion, nationality, gender, sexual orientation or gender identity.

BECOME A MEMBER

Support The Cheltenham Center for the Arts, a not for profit 501(c) 3, by becoming a member! Members receive a number of privileges, including class discounts and participation in our Annual Members' Show.

DONATE!

The Cheltenham Center for the Arts relies on the support of its members, businesses, foundations and governmental partners to meet its mission to provide inspiring programming and exhibits. For 81 years the Center has maintained the goal of building a supportive community "for people to work together and talk together about art."

Please consider making a contribution to our Annual Fund. In order for us to grow and thrive, your support is critical. Your tax deductible contribution or planned gift will make a difference in building programs and services for our community.

WHAT'S HAPPENING AT THE CENTER?

Space Rentals—We proudly rent our gallery spaces for special events, our theater for performances, and make our studios available to collaborative arts organizations. For more information please contact info@cheltenhamarts.org.

Art Parties—Treat your child (or yourself) to an art party! You and your guests will enjoy a fun-filled celebration featuring the visual or performing arts of their choice. You bring the cake and refreshments, we supply the fun! Appropriate for ages 5-Adult! Call for details: 215-379-4660 or email info@cheltenhamarts.org.

Guilds and Affiliates—The Cheltenham Center for the Arts is proud to welcome a community of professional artists to the Center through its affiliation with:

- The Cheltenham Clay Guild www.clayguild.com
- The Cheltenham Printmakers Guild www.printmakersguild.com
- Artessa Alliance www.artessaalliance.org.

For information about membership in these organizations please visit their websites directly or call the Center at 215-379-4660.

CELEBRATE LOCAL ARTISTS
AT OUR ONLINE CCA SHOP &
OUR POP-UP CCA SHOP EVENTS.

Learn more at <https://cheltenhamarts.org/ccs-shop>.



BEGINNING SKILLS FOR POTTERS

Instructor: Devin Brown
Tuesdays, 5-8pm
Tuition: \$285 (Members: \$270)

This class teaches the basics of wheel throwing, as well as creating the basic cylinder and bowl forms. This class will concentrate on weekly projects designed by the instructor. The first half will focus on basic techniques of centering and throwing for beginners. Later, there will be demonstrations in thrown and altered combining techniques, as well as decorative glaze techniques to enhance your surfaces. No experience necessary.

SURFACE DECORATION AND MORE

Instructor: Angela Humes
Wednesdays, 12-4pm
Tuition: \$350 (Members: \$335)

This class will focus on decorating the form with underglazes, glazes, mason stains, and carving techniques. The instructor will work alongside you, giving tutorials and showing her own unique processes of watercolor underglazing, sgraffito, and carving.

CLAY OPEN STUDIO

Is available to all currently enrolled clay students.
Sundays, 1-4pm & Thursdays, 1-4pm
\$10 per day or \$65 for 8 days
(paid in advance)

BEGINNERS AND BEYOND FOR POTTERS

Instructor: Angela Humes
Fridays, 11am-3pm
Tuition: \$350 (Members: \$335)

This class teaches the basics of wheel throwing and introduces textures like mishima, underglaze painting, and the use of stains. Learn how to develop a body of work through demos, one on one instruction, and guidance from the instructor. Demonstrations will focus on trimming, surface, and glazing techniques.

START AT THE BEGINNING: HANDBUILDING

Instructor: Victoria Smith
Begins Winter Session,
Saturdays: 9:30am-12:30pm
Tuition: \$285 (Members: \$270)

Beginner/Intermediate Handbuilding. Class will cover and review Hand Building Skills— Pinch, Coil and Slab. Demonstration for each project assigned. Each student is encouraged to create an original project upon approval. Materials list available upon registration. Class limited to 8 students.

INTERMEDIATE WHEEL THROWING

Instructor: Angela Humes
Thursdays, 5-8pm
Tuition: \$285 (Members: \$270)

This class teaches wheel throwing to intermediate level students who are wanting to learn how to finesse their work. We will have demonstrations and projects designed by the instructor to hone your individual talent. The instructor will guide you toward your personal goals in clay.

DEVELOPING SKILLS IN CLAY

Instructor: Ellen Pine Litwin
Wednesdays, 6:30-9:30pm
Tuition: \$285 (Members: \$270)

Beginners will be introduced to basic hand building skills and introduced to the potter's wheel. More advanced students will focus on developing their skills and making more complex forms. Students will have the opportunity to set individual goals with the help of the instructor. Learning about the glazing and firing process is included.

IMPROVING YOUR SKILLS IN CLAY

Instructor: Ellen Pine Litwin
Thursdays, 10am-1pm
Tuition: \$285 (Members: \$270)

Improve your skills by learning the "Details of Craftsmanship" that make your work more personal and finished. We will focus on throwing and handbuilding skills. A variety of lids, handles and spouts will be demonstrated, along with exercises designed to improve technique. Advanced students will have the opportunity to set individual goals with the help of the instructor. Learning about the glazing and firing process is included.

ADVANCED HANDBUILDING IN EARTHENWARE CLAY

Instructor: Barbara Hanselman
Tuesdays, 11-2pm
Tuition: \$285 (Members: \$270)

This adventure starts out by exploring basic pinch, coil and pinch-strip constructions then moves onto building with slabs. We'll not only learn how to form the clay parts for making WINDCHIMES, we'll also use the pinch-strips method of construction to form vases and bowls. By creating our own patterns and textures on the clay surface, it's a breeze to build pieces which are truly our own. Colorful surface enhancements using engobes, terra sigillata, under glazes and specialty low fire glazes are also an integral part of this experience.



Clay may be purchased at registration, during office hours or from instructors during classes, \$30 per bag, payable by cash or check. Includes firing fee.

PAINTING: A CREATIVE APPROACH

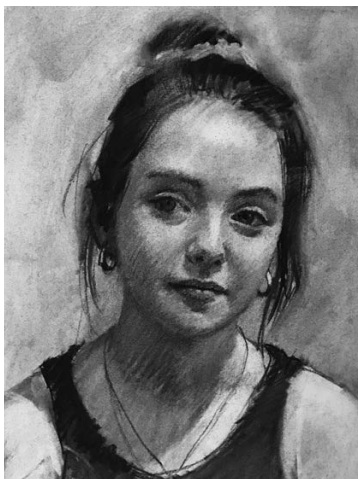
Instructor: Stephen Kennedy
Tuesdays, 10am-2pm
Tuition: \$290 (Members: \$275)

This class includes demonstration and instruction in composition, color theory, and painting techniques using oil, acrylic, and charcoal. Personal growth and expression are emphasized in critiques. New students should bring the medium of their choice or vine charcoal and an 18"x24" charcoal pad for the first class.

FIGURE DRAWING OPEN STUDIO

Instructor: Monitor
Saturdays, 10am-1pm
Tuition: \$15 drop in fee

This is an opportunity to work from a nude model and improve your drawing skills. Each session will start with 2-3 minute poses and extend to 20 minutes. This is a monitored class but instruction will be available upon request.



GARDEN PAINTING AND PICNIC CRITIQUE—HYBRID

Instructor: Lynne Campbell
Wednesdays, 10am-1pm,
September 14, 21, 28, and October 5, 12
Tuition: \$160 (Members: \$145)

This is a 5-week painting intensive: four weeks of remote painting with a focus on gardens, and the last week we will gather together on the grounds of Cheltenham Center for the Arts to share a potluck picnic and look at each other's work. Bring a dish and a painting! Gardens offer a beautiful way to work from life nearby and offer abundant variety, whether it's a little pot-garden on an urban deck, a big leafy yard, or a still life of your garden flowers. We will focus on the garden as a means to explore pattern in painting, composition, light, and color. Instruction will be remote, via text and email, and will include demonstrations by the instructor as well as examples from art history.

DRAWING IN CHARCOAL

Instructor: Stephen Kennedy
Wednesdays, 6:30-9:30pm
Tuition: \$275 (Members: \$260)

Charcoal is one of the oldest, most versatile, and least expensive drawing mediums. This course will emphasize tonal value, perspective, and composition and will include demos, discussions, and critiques. The opportunity to progress your drawing to painting is available. Students will work from a live model for three of the sessions. A great course for beginners as well as more advanced artists, wishing to refine their skills.



INDEPENDENT STUDY IN PAINTING AND DRAWING

Instructor: Jennifer Baker

Thursdays, 10am-3pm

Tuition: \$310 (Members: \$295)

Thursdays, 10am-1pm

Tuition: \$250 (Members: \$235)

Thursdays, 12N-3pm

Tuition: \$250 (Members: \$235)

This class provides an opportunity for artists of intermediate and advanced levels to refine and strengthen their creativity in a relaxed and supportive studio setting. Receive individual guidance or work independently in any medium. Pursue your own original subjects and projects, or choose to work from a still life arrangement. Artists are to bring their own materials and supplies.

DRAWING

Instructor: Roberta Schlesinger

Tuesdays, 6:30-8:30pm

Tuition: \$225 (Members \$210)

Drawing is the fundamental skill that will transform your painting or crafting skills. It is essential to making great art. Whether you've been drawing for a while, or you're an absolute beginner, this class will help you improve. You will learn how to translate what you see and bring it to life on the page. You will learn tips, techniques and materials that will help you take your drawings to a professional level.

WATERCOLOR PAINTING

Instructor: Roberta Schlesinger

Thursdays, 6:30-8:30pm

Tuition: \$225 (Members \$210)

Students get step-by-step instruction in the fundamentals of watercolor painting. This course teaches classical watercolor techniques which can be adapted to any subject. You will master the basic techniques, build confidence, and most importantly - enjoy the process. You will get individual guidance and support in a cooperative and mutually helpful environment. Classes consist of live demos, structured exercises, and project paintings that apply each technique.

JOURNEYS IN COLOR PRINTMAKING

Instructor: Nicole Patrice Dul, M.F.A.

Wednesdays, 11:30am-2:30pm

Tuition: \$250 (Members \$235)

\$25 special materials fee, paid to instructor. Your own paper and substrates are needed for personal projects.

Expand your knowledge of color mixing and printmaking ink properties. Move your individual printmaking projects forward by understanding color interactions, harmonies, value, intensity, contrast, temperature, and transparency/opacity options possible with ink. Using a variety of ink media to mix colors and additives, we will create color resource charts. Attention will also be given to color meaning as we explore optics and enhance our perception. Through exercises, and review of your personal work you will have better command of your media, will further develop a unique visual language, and gain more consistency and confidence in your work. All levels are welcome.



NON-TOXIC PRINTMAKING

Instructor: Katie VanVliet

Thursdays, 10am-2pm

Tuition: \$290 (Members: \$275)

This class includes demonstrations, critiques and instruction in all basic printmaking media: collographs, monoprints, silkscreen, drypoint intaglio, relief printing. Curriculum is crafted by students' interests with a focus on individual attention to complete your projects. New innovations covered in depth. Please come to class with any printmaking supplies you have, with additional materials list discussed first day of class. All levels welcome.

PROJECTS IN PRINTMAKING

Instructor: Nicole Patrice Dul, M.F.A.

Thursdays, 7-9:30pm

Tuition: \$240 (Members \$225)

Build on your experience in printmaking and further develop individual projects. Tackle several approaches to non-toxic printmaking including embossing, relief, intaglio, planographic, contact and screen printing processes. New to printmaking? Explore how the wide variety of print media available is relevant to your artwork. Whether advanced or beginner, the instructor offers critiques, personal instruction and demonstrations to help you achieve your project goals. Materials will be discussed on the first day of class and reflect your own objectives. All levels are welcome.



JEWELRY MAKING FOR BEGINNERS/BEYOND BEGINNERS

Instructor: Marthe Roberts-Shea
Mondays, 6:30-9:30pm
Tuition: \$270 (Members: \$255)

Explore the craft of jewelry making by learning to fabricate your own one-of-a-kind creations! Through instructor demonstration and hands on practice, students will learn the same skills that professional jewelers use. Our Jewelry Studio has all the special tools that you'll need to: Saw, pierce metal, rivet, file, solder, add texture to your pieces and apply different finishes and patinas. Base metal (Copper or Brass) will be provided for you to practice technique on the first project. When you are ready to advance to different designs, you will learn how to order supplies from actual jewelry making resources. No experience necessary.

INTERMEDIATE/ADVANCED JEWELRY MAKING

Instructor: Marthe Roberts-Shea
Thursdays, 10am-1pm
Tuition: \$270 (Members: \$255)

Incorporate your basic jewelry making skills with more advanced opportunities. In this hands-on class, along with instructor demonstration, students will practice the techniques needed to further their jewelry making capabilities. Discover how to use the Rolling Mill to add texture to your metal. Learn how to set your jewelry up for more controlled soldering with cleaner outcomes. Add motion to your pieces by making and incorporating hinges. Learn about different products that are available to help you achieve professional results. Students will need to order precious metal (Silver) from resource suppliers before class begins. Materials list available at registration. Knowledge of sawing and soldering is extremely helpful.

VINYASA YOGA

Instructor: Maryann Green
Tuesdays, 8-9am
\$10 drop in fee

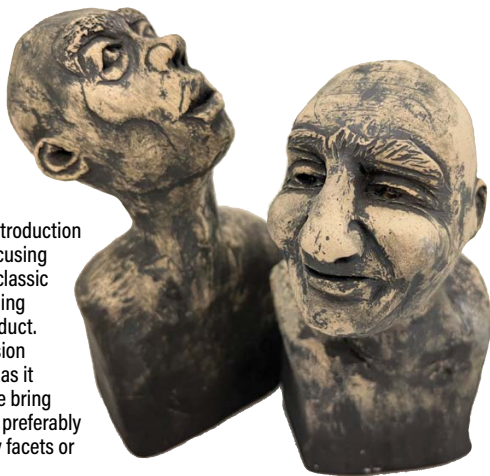
Learn and practice calming the mind while developing strength, balance and increased flexibility in your body. All levels welcome. Please bring a large towel or yoga mat to class and wear loose, comfortable clothing.



A HEAD START: INTRODUCTION TO SCULPTURE

Instructor: Victoria Smith
**Saturdays, September 17 &
September 24, 9:30am-12:30pm**
Tuition: \$75

This 2 day workshop will be an introduction to making figurative sculpture focusing on the human head. We will use classic hand building techniques - pinching and coiling our way to a final product. We will incorporate class discussion of the basic anatomy of the head as it relates to form and design. Please bring one texture tool to the first class; preferably a small rock/stone that has many facets or is rough.



MOSAIC MAGIC

Ages: Teen to Adult
Instructor: Nicole Patrice Dul, M.F.A.
Time/Days: Sundays, October 9, 12N-4pm
& October 16, 12:30pm-2:30pm
Tuition: \$100, materials included.

Enjoy this hands-on mosaic making workshop and learn basic techniques using broken china, cut stained glass, mirror and grout. Be inspired by ancient and contemporary mosaic masterpieces and then create your own colorful mosaic. Understand elements of composition as you construct your mosaic and gain an understanding of the tools and safety precautions needed to craft beautiful works of art. Each participant will leave with their own completed mosaic panel. Grouting and installation of mounting hardware will be done at the second session.

**CHECK OUR WEBSITE FOR ADDITIONAL
WORKSHOPS THROUGHOUT THE YEAR—
WE ARE ALWAYS ADDING MORE!**

**If you have an idea for a workshop,
contact CCA at info@cheltenhamarts.org**

ART JOURNALING: YOUR ANCESTRY IN MIXED MEDIA

Ages: Teen to Adult
Instructor: Nicole Patrice Dul, M.F.A.
**Wednesdays, September 28-November 2,
6:30-9pm**
Tuition: \$200
**\$20 materials fee, paid to instructor
(materials included except for personal
photos and ephemera).**

Let your family stories and pictures be your guide to making a beautifully crafted ancestral tribute journal. You will be guided through 6 weeks of creative experimentation in visual journaling about your family tree. Several mixed media project ideas will be given. The course will be broken up into six sessions: Unearthing Content and Composing Your Story, Journal Design and Assemblage, Looking for Inspiration: Ancestry in Art, Ancestral Vision Pages & Finding a Color Palette, Paper Clay, Collage, and Image Transfer Methods, and Sketching and Mark Making Techniques. Communicate the strong connection you have to your ancestors and honor your lineage with this artistic journal.

CRITIQUE DAY

Moderator: Colleen Hammond with invited guests. Check our website for details.
**One Sunday per month
September-March, 12N-1:15pm**
Tuition to Present: \$10
**Registration required,
limit 5 presenters per date**
Tuition to Observe: Free to the public.
First date: September 25

Critique Day is a monthly opportunity for artists to come together in a safe environment for support and encouragement in their artistic practices. Artists and art professionals are invited to share their knowledge and expertise, to answer questions and address the challenges artists face. Varied perspectives, technical and emotional components will be explored. Our goal is to assist artists with finding their creative voice, and provide guidance in a sensitive and supportive manner.



START WITH ART!

Ages 5-8

Instructor: TBD

Saturdays, 9:30-10:45am

Tuition: \$135 (Members \$120)

Start your weekend with art! Creative exploration in drawing, cartooning, painting, printmaking and more. Join us for some beautiful fun.

DRAWING FOR KIDS

Ages 9-12

Instructor: TBD

Saturdays, 11am-12:15pm

Tuition: \$135 (Members: \$120)

Cartooning, contour drawing, realistic drawing, and exploring abstraction. You will explore all this and more in this drawing class for kids ages 9 to 12 years. We will work with a variety of materials. The focus will be on the fundamental skills in a low-pressure, nurturing atmosphere. This class is perfect for any child who is interested—prior drawing experience is NOT necessary—just a desire to put pencil to paper and create!



CLAY FOR KIDS

Ages 5-8

Instructor: TBD

Saturdays, 11am-12:15pm

Ages 9-12

Saturdays, 9:30-10:45am

Tuition: \$135 (Members: \$120)

In this class, children will be encouraged to develop their creative skills by learning the basics of working with clay. Students will produce decorative and functional pottery as well as sculpture. Older children will have the opportunity to try the potter's wheel.

AFTER-SCHOOL CLAY

Ages 5-8

Instructor: TBD

Wednesdays, 4:30-5:45pm

Ages 9-12

Instructor: TBD

Wednesdays, 6-7:15pm

Tuition: \$135 (Members: \$120)

In this class, children will learn the fundamentals of handbuilding while exploring their creativity through a variety of functional and sculptural projects. Older ages will learn to use the potter's wheel. No experience necessary. All materials and tools provided.

**WHEEL THROWING FOR TEENS—
4 WEEKS**

Instructor: Catherine Gacki-Hartt

Ages 13+

Mondays, 4-6pm

September 12, 19, 26, and October 3

Tuition: \$85

This 4-week class teaches the basics of wheel throwing to form cylinders, bowls and vases using the potter's wheel. We will explore decorative glaze techniques to enhance finished surfaces. Beginners welcome, no experience necessary.

TEENS AGE 15 AND OLDER MAY ALSO

REGISTER FOR SELECTED ADULT CLASSES.



**TWO NEW WORKSHOPS FOR
TEENS AND ADULTS:**

**ART JOURNALING: YOUR
ANCESTRY IN MIXED MEDIA**

AND

MOSAIC MAGIC

SEE WORKSHOPS PAGE FOR DETAILS.

CHECK OUR WEBSITE FOR MORE CHILDREN'S CLASSES!



BRIGHT INVENTION

Classes in improvisation for all abilities with Bright Invention!

- Advance and beginner's classes at the Cheltenham Center for the Arts.
- Classes for people with disabilities at Elkins Central.

Go to www.brightinvention.org to see a schedule and to enroll!

Questions about these classes? Call 877-674-8338, or email ben@brightinvention.org.

You may audit the first class at no charge. 6 - 9 month tuition payment plans available.



SINE TIMORE AT CCA

Sine Timore (see-nay ti-more-ay) is dedicated to providing a theatre arts program to students in the suburbs of Philadelphia that offers development, training, vocal instruction and lessons in auditioning, improv, acting, dance, and movement. We strive to offer opportunities to all students who love to perform, and focus on serious training and instruction. Sine Timore provides a welcoming space where students feel safe to express their creativity and be a part of a strong community team. Ultimately, the goal is to help students gain confidence, make friends, explore the arts, be their best and have a lot of fun while performing. We are proud to form an alliance with the Cheltenham Center for the Arts, and are glad to hold performances, fundraisers, and more in their wonderful space. Please follow us on social media for how you can get involved with our growing company.

www.sttheatre.com



Sine Timore Theatre



@sttheatre





ELKINS CENTRAL

Located in the historic Elkins Park Train Station in the heart of Elkins Park, Elkins Central is the Cheltenham Center for the Arts' second venue.

Since 2015 CCA at Elkins Central has become a staple space for the arts in Elkins Park hosting a wide variety of intimate concerts, classes and other community events throughout the year. CCA at Elkins Central offers our community an event place to gather, and a venue to highlight the arts and humanities.



ELKINS CENTRAL • 7879 SPRING AVENUE • ELKINS PARK, PA, 19027

To learn more about CCA at Elkins Central and see a schedule of upcoming events, visit www.cheltenhamarts.org or www.facebook.com/elkinscentral

ELKINS CENTRAL IS THE PERFECT PLACE TO HOST YOUR NEXT EVENT!

The space may be rented for performances, parties, meetings, and much more.

For information, contact us at

elkinscentral@cheltenhamarts.org.



jazz bridge

NOW IN ITS 13TH YEAR AT THE CHELTENHAM CENTER FOR THE ARTS,

Jazz Bridge is a non-profit arts organization serving a need no one else is addressing in the Philadelphia area: responding to local jazz and blues artists in times of need. Proceeds from the neighborhood concert series go to help local jazz musicians in personal or professional crisis.

Concerts feature prominent jazz and blues musicians during an hour and a half long program which includes a Q&A with the artists and light refreshments.

Visit cheltenhamarts.org or jazzbridge.org for a list of performers.

2022-23 DATES AT CCA:

OCTOBER 5 • NOVEMBER 2 • DECEMBER 7 • MARCH 1 • APRIL 5 • MAY 3

CONCERTS ARE THE FIRST WEDNESDAY OF EVERY MONTH, FROM OCTOBER TO MAY

(no concert in January or February) 7:30-9 PM

TICKETS: \$20 (\$15 in advance) | \$5 students

FALL: September 12–November 5, 2022 **WINTER:** November 17, 2022–January 21, 2023

SPRING 1: February 6–April 1, 2023 **SPRING 1:** April 17–June 10, 2023

CLASS #	CLASS NAME	SESSION	TUITION

Are you currently a member of CCA? Yes No
 If not, please consider joining now! Choose a level:

<input type="checkbox"/> Individual (\$45)	<input type="checkbox"/> Patron (\$250-\$499)	MEMBERSHIP:
<input type="checkbox"/> Family (\$75)	<input type="checkbox"/> Sponsor (\$500-\$999)	
<input type="checkbox"/> Supporter (\$100-\$249)	<input type="checkbox"/> Benefactor (\$1000+)	

I would like to donate to the CCA Annual Fund Drive!

<input type="checkbox"/> \$25	<input type="checkbox"/> \$50	<input type="checkbox"/> \$100	<input type="checkbox"/> \$250	DONATION:
<input type="checkbox"/> \$500	<input type="checkbox"/> \$1000	<input type="checkbox"/> Other _____		

TOTAL AMOUNT:

Student Name _____

Parent's Name (if registering a student under 18) _____

Address _____

City/State/Zip _____

Home Phone _____

Work/Cell Phone _____

Email _____

Date _____

Please pay by check, if possible.

Payment Method: Check # _____ Cash

Visa MasterCard Discover

Credit Card # _____

Exp. Date _____ CVC Code _____

Signature _____

Please return completed form to the address below or register online.

Refund and Pro-Rating Policy for Classes and Workshops: A \$15 processing fee will be charged for all refunds. Upon student withdrawal one week prior to the first class: full tuition refund minus processing fee. Up through second class: 75% refund minus processing fee. No refund will be given after the second class. Membership fees are non-refundable. CCA does not pro-rate any class due to late registration or missed classes. Exceptions to these policies will only be considered in cases of extremely extenuating circumstances with a written request to the Director. Upon registration, students give permission to the Center to publish student photographs in print or on the web for fund-raising and press purposes. Classes require a minimum of 5 students to run.



439 Ashbourne Road
Cheltenham, PA 19012
215-379-4660
www.cheltenhamarts.org

2022 | 2023

CCA EVENTS

JAZZ BRIDGE CONCERTS

First Wednesday from October to May, 7:30-9pm
(See schedule inside. No concerts January or February) • Tickets required

FALL EXHIBITION

See website for details.

ART PARTY 2022!

Saturday, November 5, 2022, 7-10pm • *Tickets required*

CCA MEMBERS' SHOW

January 8-February 3, 2023
*Opening and Annual Potluck Supper:
Sunday, January 8, 2023, 3-5pm*

CLAY GUILD EXHIBIT

February 12-March 5, 2023
*Opening Reception:
February 12, 2023, 2-4pm*

FAMILY FUN DAY

Sunday, March 12, 2023, 12-4pm

12TH REGIONAL CHILDREN'S ART SHOW

March 12 – April 7, 2023

80TH ANNUAL PAINTING SHOW

April 16-May 12, 2023
*Opening Reception:
Sunday, April 16, 2023, 2-4pm*

RESIDENT ARTISTS' EXHIBIT

May 21-June 12, 2023
*Opening Reception:
Sunday, May 21, 2023, 2-4pm*

SEE OUR WEBSITE for a full
listing of concerts/classes at
Elkins Central, our venue at
the Elkins Park Train Station



Cheltenham Center for the Arts
439 Ashbourne Road
Cheltenham, PA 19012

Non-Profit Org.
US Postage
PAID
Permit No. 702
Fort Washington, PA