

SPRING  
CLASSES

# Look to the arts

Classes  
Workshops  
Exhibits

Two 8 week sessions

February 14–April 9

April 10–June 4



215-379-4660  
[www.cheltenhamarts.org](http://www.cheltenhamarts.org)

# upcoming SHOWS

February 13–March 6 *Opening Reception: Sunday, February 13, 2–4pm*

## PROCESS AND PRODUCT: A NATIONAL PAPER AND BOOK ARTS INVITATIONAL SHOW

Internationally known paper and book artists have submitted works in paper for this innovative exhibition. Along with the finished pieces of work will be models, notes, drawings and a background of how the work emerged from the artist's consciousness.

March 13–April 3 *Opening Reception, Sunday, March 13, 2–4pm*

## CHELTENHAM THIRD ANNUAL REGIONAL CHILDREN'S ART SHOW

Students from local elementary and middle schools are invited to exhibit their work in the Cheltenham Center for the Arts gallery. This is always a wonderful show and a great family day!

## April 2, 12–4pm FAMILY FUN DAY!

Spend the afternoon exploring your creative side at the Center! Come celebrate the artist in all of us with art demonstrations and hands on activities for the entire family. Create objects in our various studios, enjoy food, games and giveaways... and take one last glance at the Children's Art show.

## April 10–May 2 *Opening Reception, Sunday, April 10, 2–4pm* INNOVATIONS IN FIBERS

This invitational fibers/sculpture show includes pieces from around the country that will make you look at fiber arts in a completely different way. Come see the most innovative fiber artists in the country exhibit their new bodies of work.

## May 8–June 5 *Opening Reception, Sunday May 8, 2–4pm* 68TH ANNUAL AWARDS PAINTING SHOW

Professional artists from near and far are invited to enter their recent work in this historic show. This juried show always brings in a wide variety of fine work. One of our most festive events at the Center!

SPRING 2011



Find us on Facebook and become a member of our group—or sign up for email blasts that will keep you up to date with new workshops and events at the Center!

For more information on our instructors, visit our web site at [www.cheltenhamarts.org](http://www.cheltenhamarts.org).



The Cheltenham Center for the Arts receives arts funding support through grants from the Pennsylvania Council on the Arts, a state agency funded by the Commonwealth of Pennsylvania.



The Cheltenham Center for the Arts accepts all students regardless of race, religion, nationality, gender, sexual orientation or gender identity.

Cover image: Art Brener

# WORKSHOPS FOR CHILDREN & TEENS

## African Masks

*Ages 8–12*

In this workshop students will learn about masks from around the world and use paper, paint and other materials to create their own.

Instructor: Theresa Poli

Sunday, February 20, 12:30–2pm, Class #CW-11A

Sunday, April 10, 12:30–2pm, Class #CW-11B

Tuition: \$30

## Cartoon Illustration Workshop

*Ages 8–12*

Learn how to design a character, draw different facial expressions and compose a comic of your own.

Instructor: Kathleen Hope Smith

Friday, February 25, 4–6pm, Class #CW-13A

Friday, March 18, 4–6pm, Class #CW-13B

Friday, May 13, 4–6pm, Class #CW-13C

Tuition: \$30

## Polymer Clay for Children

*Ages 8–12*

Polymer clay can be made into beautiful jewelry to keep or gives as gifts. In the first class we will work with colorful clay to form beads and pendants. In the second class we will work with our baked pieces to create necklaces, bracelets and earrings.

Instructor: Joanne Bryant

Sunday, Feb. 27 & March 6, 12:30–2pm, Class #CW-10A

Sunday, April 3 & 10, 12:30–2pm, Class #CW-10B

Tuition: \$35 includes materials

## Colorful Chains

*Ages 9–11*

Students will learn how to make chains using multi colored aluminum. All materials and gift boxes will be included.

Instructor: Hershaw Wiggins

Saturday, April 16, 12:30–2:30pm, Class #CW-12

Tuition: \$40



Workshops will be added throughout the spring. Please refer to our website for the latest additions.



## BECOME A MEMBER!

Cheltenham Center for the Arts members receive discounts on class tuition along with a wide range of other benefits. Your vital contribution supports the Center by keeping tuitions down and innovative programming up! Membership is as low as \$45 for an individual and \$75 per family. To join, see the registration form on the back page of this brochure.

215-379-4660 [www.cheltenhamarts.org](http://www.cheltenhamarts.org)

# CLASSES FOR CHILDREN & TEENS

## Wheel Working and Hand Building in Clay

*Ages 8–12*

This is a great class for students to learn how to use a potter's wheel. Children will become familiar with the process of centering and pulling a cylinder. Hand building projects will also be introduced during the class. Individual attention is given to all students. All skill levels are welcome!

Instructor: Joanne Bryant  
Monday, 4:30–6pm, Class #C-10  
Tuition: \$120 (Members: \$105)

## Teen Clay Class

*Ages 13+*

Make the jump to high fire clay working on individual wheel and hand building projects. Individual attention is given to each student. There will be weekly demonstrations teaching students more advanced pottery techniques. This class is perfect for teens building their college portfolio, or teens that just love to work with clay.

Instructor: Ellen Pine Litwin,  
Wednesday, 4–6pm, Class #C-11  
Tuition: \$160 (Members: \$145)

## Trash to Treasures—Recycled Art

*Ages 7–12*

We will create a range of projects using both 2D and 3D media. This is an opportunity to use every day materials such as boxes, tubes, paper and other household items that would end up in the trash...and create beautiful art treasures!

Instructor: Joanne Bryant  
Friday, 4:30–6pm, Class #C-12  
Tuition: \$120 (Members: \$105)



## Clay for Kids

*Ages 7–9*

Children will be encouraged to develop their creative skills while learning the basics of working with clay and making various sculpture projects. Emphasis will be on imaginative use of traditional techniques. Children can try throwing on the wheel. Use and application of glazes will also be taught.

Instructor: Ellen Pine Litwin,  
Saturday, 9–10:15am, Class #C-13  
Tuition: \$120 (Members: \$105)

## More than Play with Clay

*Ages 10–12*

This class is open to students of all levels. Students will explore a variety of techniques in clay. Both wheel and hand building projects are planned for each class. The projects include functional pottery, decorative art and sculpture.

Instructor: Ellen Pine Litwin  
Saturday, 10:30am–12pm, Class #C-16  
Tuition: \$120 (Members: \$105)



## Draw, Paint, Print and More

*Ages 6–12*

Explore the many ways that art is made. Children will be introduced to various drawing materials and techniques as well as painting, printmaking and collage. Students will be encouraged to be creative and express their personality within each work of art.

Instructor: Kathleen Hope Smith  
Ages 6–8: Saturday, 9–10:15am, Class #C-15A  
Ages 9–12: Saturday, 10:30am–12pm, Class #C-15B  
Tuition: \$120 (Members: \$105)

## Foundation Drawing

*Ages 13+*

Students will learn the basics of drawing with traditional media; pencil, charcoal, conte, and ink. The students will draw from observation and render those observations through the use of the elements of art & principals of design to create studies and finished drawings.

Instructor: Klair Miller  
Saturday, 10am–12:30pm, Class #C-14  
Tuition: \$160 (Members: \$145)

## Portraits and Self Portraits for Teens

*Ages 13+*

This course guides students through the creation of portraits and self-portraits from life using basic drawing media. Proportions of the face, contour drawing, the use of light and dark to render form, and the distortion of natural proportion to convey expressive qualities will be covered. Examples of self-portraits throughout history will be shown.

Instructor: Klair Miller  
Saturday, 1–3pm, Class #C-17  
Tuition: \$120 (Members: \$105)

## SUMMER CAMP 2011 June 27–August 19



**Eight weeks of creative fun for children ages 5-12. One- and two-week sessions; full and half-day programs. Call for registration information or visit [www.cheltenhamarts.org](http://www.cheltenhamarts.org)**

## Clay Basics and Beyond

Finding your inner voice in clay is the objective of this class. Clay is one of the first materials known to man and has evolved over the centuries. This class will introduce the beginning student to the basics of wheel thrown and hand built objects while encouraging more advanced students to continue their own journey of personal expression. Each student will be encouraged through a nurturing and caring atmosphere.

Instructor: Joanne Bryant,  
Monday, 10:30am–12:30pm, Class #D-10  
Monday, 7–9pm, Class #E-10  
Tuition: \$175 (Members: \$160)

## A Creative Approach to Clay and Surface

Treatments of sculptural, hand built, pinched and wheel thrown forms will be explored in this class. This is an advanced class where weekly demonstrations will be given in “tricks of the trade” hand building techniques as well as instruction on working with glazes, underglazes, slips, and terra sigillatas. Colored engobes combined through or layered onto clay will also be demonstrated.

Instructor: Barbara Hanselman  
Tuesday, 9am–12pm, Class #D-12  
Tuition: \$250 (Members: \$235)

Barbara Hanselman



## ABC—Absolute Beginning Clay!

All of the other clay classes sound way too overwhelming and you are looking for a structured class that will take you from the very beginning steps of understanding and exploring clay? This is the class for you! Students will learn the differences in clay bodies, glazes and have the opportunity to learn basic wheel and hand building techniques.

Instructor: Joanne Bryant,  
Friday, 1:30–3:30pm, Class #D-20  
Tuition: \$175 (Members: \$160)

## Introduction to Pottery

For beginners to experienced potters, this class will concentrate on weekly projects designed by the instructor. The first session will focus on basic techniques of centering and throwing for beginners. For advanced students there will be demonstrations in thrown and altered combining techniques. In the second session the beginning demonstrations will be continued. For the more advanced students the focus will be on making multiples in pottery. Clay bodies and glaze techniques will be explored in this class.

Instructor: Ellen Pine Litwin  
Thursday, 10am–1pm, Class #D-17  
Thursday, 7–10pm, Class #E-17  
Tuition: \$250 (Members: \$235)

## Production Skills for Potters

Students learn pottery production skills using throwing and hand building promoting a mature style tailored to each individual student. Glaze chemistry, clay bodies, and firing techniques will be taught. The goal of this class is help students develop their own distinctive style to refine their production skills.

Instructor: Peter Quinn  
Tuesday, 7:30–10:30pm, Class #E-13  
Tuition: \$250 (Members: \$235)

*Clay will be available for purchase from the instructor during class, by cash or check. The cost is \$25 per 25lb. bag, which includes firing fees. Clay brought in from outside sources must be approved and a \$10 firing fee paid to CCA per bag.*

**OPEN STUDIO is available for all students currently enrolled in a class at the Center. Students will be issued an enrollment card at the beginning of each session.**

Tuesday, 12:30–3:30pm  
Friday, 6:30–9:30pm  
Sunday, 12:30–3:30pm

## Ceramic Sculpture

Clay is a material of unlimited technical and creative uses. It is excellent for many types of sculpture, from figurative to architectural. Students explore a variety of ceramic sculpture techniques and a range of surface treatments from glaze to patina.

Instructor: Peter Quinn  
Monday, 1:30–4:30pm, Class #D-11  
Tuition: \$250 (Members: \$235)

## Independent Study in Clay: Sculpture and Functional

Explore the versatility of clay. Learn to sculpt, throw, hand build and work with slabs. The instructor will meet with each student at the start of the session and help plan projects throughout the class. You will learn the technical aspects of ceramics as well as develop a refined sense of aesthetics.

Instructor: Peter Quinn  
Wednesday, 10am–1pm, Class #D-14  
Tuition: \$250 (Members: \$235)

## Exploration in Construction/ Sculptural Assemblage

Students will learn the versatility of wheel thrown and hand built forms from functional to sculptural with an emphasis on developing a personal style. This class is designed to give each student personal attention. Beginning students, as well as advanced, are welcome.

Instructor: Peter Quinn  
Wednesday, 1:30–4:30pm, Class #D-15  
Tuition: \$250 (Members: \$235)

## Clay for the Garden

In this class you will prepare for spring by creating beautiful art for your garden. This class will be project driven. Weekly demonstrations will be given in making bird feeders, lanterns, luminaries, bird baths, stepping stones and planters. Whimsical creatures can also be made.

Instructor: Joanne Bryant  
Friday, 10am–1pm, Class #D-18  
Tuition: \$250 (Members: \$235)

## Small Wonders in Clay

A beautiful object, a well made toy, a personal hold a personal and intimate relationship with the viewer. In this class we will look at simple objects from our everyday lives to find inspiration for the pieces we create. Low fire clays, slips, oxides, glazes, and other surface treatments will be explored.

Instructor: Jill Allen  
Friday, 10am–1pm, Class #D-19  
Tuition: \$250 (Members: \$235)



## Expressing Yourself in Clay

This class offers the opportunity to learn the skills of working in clay. Handbuilding (pinch pots, slab construction and coils) as well as throwing on a potter's wheel will be taught. Students will be encouraged to use these techniques as a form of self expression. Glazing techniques will also be taught. There will be demonstrations in each class of different techniques. All levels are welcome.

Instructor: Ellen Pine Litwin  
Saturdays, 12:30–2:30pm, Class#: D-41  
Tuition: \$170 (Members: \$155)

## 2-D CLASSES FOR ADULTS

### Teach Me How to Draw!

Do you often think that you could never learn how to draw? Let us prove you wrong! In this class you will learn about basic observation and composition skills and materials. For people who yearn to be able to draw but need guidance and structure, this class is perfect for adults or high school students working on their college portfolios. No models will be used.

Instructor: Klair Miller  
Wednesday, 4–6pm, Class #D-26  
Tuition: \$175 (Members: \$160)

### Adventures in Creative Expression

All levels of students are welcome! Instruction in composition, color theory and painting techniques using oils, acrylics, collage, watercolor and/or pastel. There is a model or still life set up for each class. Personal growth and expression are emphasized in critiques. Please bring charcoal, a 6B pencil and 18" x 24" newsprint pad.

Instructor: Merle Spandorfer  
Tuesday, 9am–1pm, Class #D-24  
Tuition: \$235 (Members: \$215)  
Tuesday, 7:30–10:30pm, Class #E-24  
Tuition: \$200 (Members: \$185)

### Relief Printing: Woodblock and Lino Cuts

Learn how to create dynamic relief prints with single and multiple relief blocks. Instruction includes planning your print, proper carving techniques, registration alignment, exploring paper options and printing by hand and with a press. The history of this ancient printing method will be discussed, and critiques will help develop each student's studio practice.

Instructor: Bonnie Kaye Whitfield  
Tuesday, 10am–1pm, Class #D-38  
Tuition: \$200 (Members: \$185)

*Bonnie Kaye Whitfield*

### Non-Toxic Printmaking

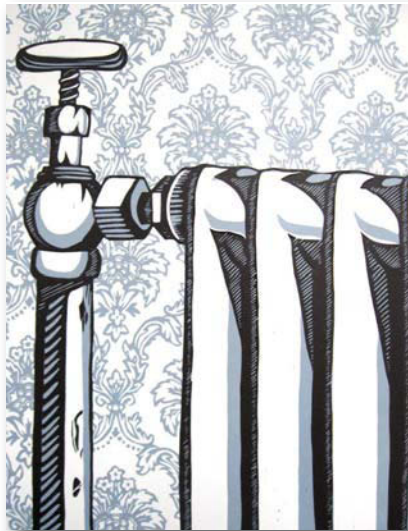
Class includes demonstrations, critiques and instruction in a variety of printmaking media; collagraphs, monoprints, monotypes, silkscreen, dry point etching, lino-cuts and wood cuts all with waterbased inks. All levels.

Instructor: Merle Spandorfer  
Thursday, 12:30–4:30pm, Class #D-40  
Thursday, 7:30–10:30pm, Class #E-40  
Tuition: \$225 (Members: \$210)

### Paper Lithography and Chine Collé

Explore the techniques of paper lithography, monotype, and chine collé. This is a great beginning class for students interested in learning basic printmaking techniques because of the individual attention given to each student. A materials list will be provided upon registration.

Instructor: Rona Richter  
Monday, 12:30–4:30pm, Class #D-22  
Tuition: \$225 (Members: \$210)  
Monday, 6:30–9:30pm, Class #E-22  
Tuition: \$200 (Members: \$185)



### Purely Pastels!

#### 4-week classes

Experiment with this versatile medium that can be used to create luminous works of art... whatever your style! Pastel is a quick, dry, "portable" medium that can be combined with drawing, printmaking or used on its own. You will be working from still life and your imagination.

Instructor: Rona Richter  
Saturday, 10am–1pm  
February 19, 26, March 5, 12, Class #D-29A  
March 19, 26, April 2, 9, Class #D-29B  
April 16, 23, 30, May 7, Class #D-29C  
May 14, 21, 28, June 4, Class #D-29D  
Tuition: \$175 (Members: \$160)

### Basic Painting

Designed for the absolute beginner, students will explore a variety of topics. Learn what to look for when buying paints, brushes, canvases, mediums, varnishes, and frames. Fine-tune your visual curiosity with simple exercises in composition, color theory, palette arrangements, and painting techniques. The class will work from still life, self-portrait, interior room studies, and from the imagination. This course includes various artistic DVD and Power Point Presentations.

Instructor: Anthony Ciambella,  
Monday, 1:30–4:30pm, Class #D-23  
Tuition: \$200 (Members: \$185)

### Painting Intuitively

This course is for artists who have the desire to experience an intuitive approach to painting. Warm up exercises, designed to free the mind and hand, will serve as points of departure. Relationships between technical skill and personal sensibility, rational decision making vs. intuitive response, and conscious vs. unconscious art making will be addressed.

Instructor: Karen Baumeister  
Friday, 10am–1pm, Class #D-28  
Tuition: \$200 (Members: \$185)



*Merle Spandorfer*

### Independent Study in Painting and Drawing

Multi media instruction is given in a group setting designed to develop a personal approach. Areas covered include watercolor, acrylic, oil, pastel, mixed media and drawing and painting from models and still life's. Discussions and critiques expand the experience.

Instructor: Paul Kane  
Thursday, 10am–3pm, Class #D-27A  
Tuition: \$265 (Members: \$250)  
Thursday, 12–3pm, Class #D-27B  
Tuition: \$200 (Members: \$185)

### Drawing and Painting the Human Figure

In this class, students will learn the fundamentals of drawing the human figure. Once they master the basic principles, students who want to paint will learn to apply those principles to oil painting. Lectures and demos are part of the instruction. Materials lists will be given to students upon registration.

Instructor: Jafang Lu  
Wednesday, 1–4pm, Class #D-25  
Tuition: \$200 (Members: \$185)  
Model fee: \$25

# OTHER CLASSES FOR ADULTS

## BOOK ARTS, PAPER ARTS

### Narrative and Content in Books

Content development is a critical part of creating books. In this course, students learn how to generate ideas and how to turn ideas into finished books. Narrative, storytelling, relating with content, book dummies and bookbinding techniques will be covered while students create one of a kind and editioned books. Bookbinding experience is helpful, but not required.

Instructor: Mandy Dunn Sampson  
Wednesday, 7–10pm, Class #E-30  
Tuition: \$250 (Members: \$235)

### Introduction to Book Arts

Whether you are an artist, writer or avid reader, the book form offers limitless creative possibilities. Learn a variety of book structures, such as single-page, accordion and stab bindings, that you will use as vehicles for your artistry. We will also create an altered book and explore more sculptural forms as you expand your definition of a book.

Instructor: Bonnie Kaye Whitfield,  
Thursday, 7–10pm, Class #E-31  
Tuition: \$200 (Members: \$185)

## COLLAGE

### 2D and 3D Mixed Media

With growing interest in mixed media art, the lines between painting and sculpture become blurred. This hands on course will help students make informed practical decisions about the most appropriate materials and how to delineate their idea.

Instructor: Anthony Ciabella  
Monday, 10am–1pm, Class #D-21  
Tuition: \$225 (Members: \$210)



## YOGA

### Vinyasa (Flow) Yoga

Learn and practice calming the mind, while developing strength, balance and increased flexibility in your body. All levels welcome. Please bring a large towel or yoga mat to class and wear loose comfortable clothing.

Instructor: Maryann Sims  
Tuesday, 8–9am, Class #D-37  
Walk in: \$10 per session payable at class.

## FIBERS & JEWELRY

### Beginning Jewelry Making

Through instructor demonstrations and “hands on” practice, students will learn the fundamentals of jewelry making: sawing, filing, soldering and polishing. No experience is necessary! A materials list will be sent prior to class.

Instructor: Marthe Roberts/Shea  
Monday, 6:30–9:30pm, Class #E-32  
Tuition: \$250 (Members: \$235)

### Intermediate/Advanced Jewelry

Students with basic skills will be able to further their work by exploring a wide range of jewelry making processes. You will learn non-complex metal forming, mechanisms and joining techniques.

Instructor: Marthe Roberts/Shea  
Thursday, 10am–1pm, Class #D-34  
Thursday, 6:30–9:30pm, Class #E-34  
Tuition: \$250 (Members: \$235)

### Beaded Jewelry (4 week sessions)

Tired of buying simple beaded jewelry? Learn to make your own necklaces, bracelets, earrings, pendants and elastic rings. The first week of class you will be introduced to the tools and products used in beading. When you begin your first project there will be demonstrations of layout, design, sizes and colors of stones. Each class will have progressively more intricate projects.

Instructor: Sarah Myers  
Tuesday, 4–6pm  
March 8, 15, 22, 29, Class #E-35A  
April 5, 12, 19, 26 Class #E-35B  
May 3, 10, 17, 24, Class #E-35C  
Saturday, 10:30am–12:30pm  
March 5, 12, 19, 26, Class #D-35A  
April 2, 9, 16, and 30, Class #D-35B  
May 7, 14, 21, 28, Class #D-35C  
Tuition: \$95 (Members: \$80)

## Knitting Basics

Not just your ole knit one, pearl two class! Students will start by learning how to knit socks and move on to scarves and other great projects! Learn from one of the best and most patient knitting instructors. Left-handers are welcome.

Instructor: Ellen Neulight,  
Thursday, 6:30–8:30pm, Class #E-36  
Tuition: \$165 (Members: \$150)

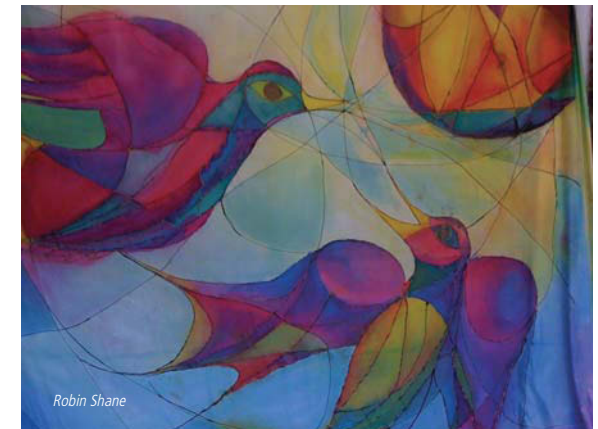
## Silk Painting Basics and Beyond

Students will learn the basics of painting on silk using various tools, techniques and processes. Various textures, color combinations and resist techniques will be explored. Students will draw inspiration from works of art, nature or their own imagination to design one of a kind fiber art.

Instructor: Robin Shane  
Wednesday, 9am–12pm, Class #D-33  
Wednesday, 7–10pm, Class #E-33  
Tuition: \$250 (Members: \$235)



Mandy Dunn Sampson



Robin Shane

# WORKSHOPS FOR ADULTS

## Focus on Form—Ceramics

This 4 week series will focus on a different throwing or building technique in each session. Week one will focus on thrown forms, week two concentrating on handles and spouts, week three you will work on bottomless forms, and the last session will be slab built boxes.

Instructor: Lana Heckendorn  
Sundays, March 6, 13, 20, 27, 9:30am–12:30pm,  
Class #W-12  
Tuition: \$135 (Members: \$120)

## Pinching and Pit Firing

Work with widely recognized ceramic artist Jimmy Clark and dispel the notion that making pinch-pots is merely a beginner's technique. Students will explore numerous variations, creating large forms, working intuitively and incorporating found objects. The workshop will conclude with a sawdust firing where multiple techniques will be taught.

Instructor: Jimmy Clark  
Sat., April 30, 10am–5pm, Sunday, May 1, 10am–5pm  
Sat., May 14, 12–4pm, and Sunday, May 15, 12–2pm,  
Class #W-25  
Tuition: \$225 (Members: \$210)

## Extra! Extra! Newsprint Techniques for the Ceramic Artist

Newsprint paper introduces many techniques for the ceramic artist who hand builds or uses the wheel. This material offers opportunities from transferring screen-printed imagery, creating visual and physical textures, and acting as a resist. I'll demonstrate all these and more including my own additional surface techniques. Students should have bisque work completed for this workshop.

Instructor: Jason Burnett  
Friday, April 15, 6–8pm & Sat.,  
April 16, 10am–4pm  
Class #W-16  
Tuition: \$175  
(Members: \$160)



Jason Burnett

## Metal Clay

Much like precious metal clay, copper clay can be molded, formed, textured, pierced, shaped and coiled. Experiment with this less expensive clay and learn how to make jewelry and small three-dimensional objects.

Instructor: Bea Batt-Behar  
Saturday, May 7, 10am–4pm, Class #W-18B  
Tuition: \$135 (Members: \$120) Materials fee payable to the instructor based on the market price of metals.

## Create a Photo Watch Face

Bring a photo or photos to class and create 23.5 mm watch faces. This workshop will teach this technique in one day and you should be able to make more than one watch.

Instructor: Hershhal Wiggins  
Saturday, March 5, 10am–4pm, Class #W-20A  
Saturday, June 4, 10am–4pm, Class #W-20B  
Tuition: \$135 (Members: \$120) plus \$50 per watch.

## Design Your Own Jewelry Workshop

In this beginning level workshop you will learn how to design beautiful jewelry using semi precious stones, crystals and fresh water pearls. You will also learn some of the basic skills for jewelry making. Students will learn how to make a necklace, pair of earrings, and a detachable pendant. At the end of the session students will be comfortable working with three essential tools: a round nose and flat nose pliers and cutter.

Instructor: Y'vonne Page Magnus  
Friday, February 25, 1–4pm, Class #W-23A  
Saturday, April 23, 1–4pm, Class #W-23B  
Tuition: \$50 (Members: \$35)  
Materials fee: \$25

Marthe Roberts/Shea

## Redesign Your Own Jewelry Workshop

Before you come to class, sort through your old costume jewelry that you no longer wear, and give it a complete makeover. Turn an old necklace into a modern pair of earrings or transform a vintage broche into a hip, double stranded necklace or bracelet.

Instructor: Y'vonne Page Magnus  
Saturday, March 19, 1–4pm, Class #W-24A  
Saturday, May 21, 1–4pm, Class #W-24B  
Tuition: \$50 (Members: \$35)  
Materials Fee: \$15

## Precious Metals Clay

PMC is pure silver in lump, sheet or paper form, or extruded through a syringe. The silver clay can be textured, pierced, layered, shaped or coiled before it is fired in the kiln. Expect to leave class with several pieces of jewelry.

Instructor: Bea Batt-Behar  
Saturday, April 9, 10am–4pm, Class #W-18A  
Tuition: \$135 (Members: \$120)  
Materials fee payable to the instructor based on the market price of metals.

## Chainmaking

This workshop is a quick chain making class that should produce one or two complete bracelet chains. If time permits you will also make a pair of earrings. Materials list will be emailed prior to the class. In each session students will make different chains.

Instructor: Hershhal Wiggins  
Saturday, March 26, 10am–4pm, Class #W-19A  
Saturday, May 14, 10am–4pm, Class #W-19B  
Tuition: \$135 (Members: \$120)  
Materials Fee: \$25



## Knitting with Wire

Learn to knit with wire and beads! The possibilities for jewelry are endless. You will learn the tricks of how to knot comfortably with wire and learn the technical considerations regarding the various types of wires that are used. You should have some previous knitting experience and should come to class with 2 bamboo knitting needles.

Instructor: Ellen Neulight,  
Sunday, March 27, 10am–1pm, Class #W-21  
Tuition: \$50 (Members: \$35)

## Felted Purses

Are you interested in learning how to make felted purses, hats, slippers, mittens and more? It's both easy and fun! In this class you will begin a great purse that you will felt at home. You will learn how to felt, what types of yarn to use and different tips for successful felting. Includes comprehensive written material. You will need worsted weight 100% wool yarn and size 10 knitting needles.

Instructor: Ellen Neulight,  
Sunday, February 20, 10am–1pm, Class #W-22A  
Sunday, April 24, 10am–1pm, Class #W-22B  
Tuition: \$65 (Members: \$50)

## Round Reed Basketry

Using colorful hand-dyed round reed gives a contemporary approach to basketry. The provided hand woven base will enable each student to begin learning basic techniques while making the decisions about color and shape as work progresses. After the first basket is completed students will learn how to make their own base and weave a second basket, finishing it with a uniquely woven top edge. This workshop is intended for beginners or those wanting to refresh or expand their basketry skills. Bring a lunch! Workshop limited to eight students.

Instructor: Bette McCarron  
Saturday, April 9, 9:30am–4pm, Class #W-15  
Tuition: \$75 (Members: \$60)  
Materials Fee: \$10 to the instructor at the class.





Cheltenham Center for the Arts  
439 Ashbourne Road  
Cheltenham, PA 19012

Non-Profit Org.  
Car - RT  
US Postage Paid  
Cheltenham  
Permit No. 21

Dated Material  
DO NOT DELAY

*Celebrating 70 Years  
of Creative Community!*